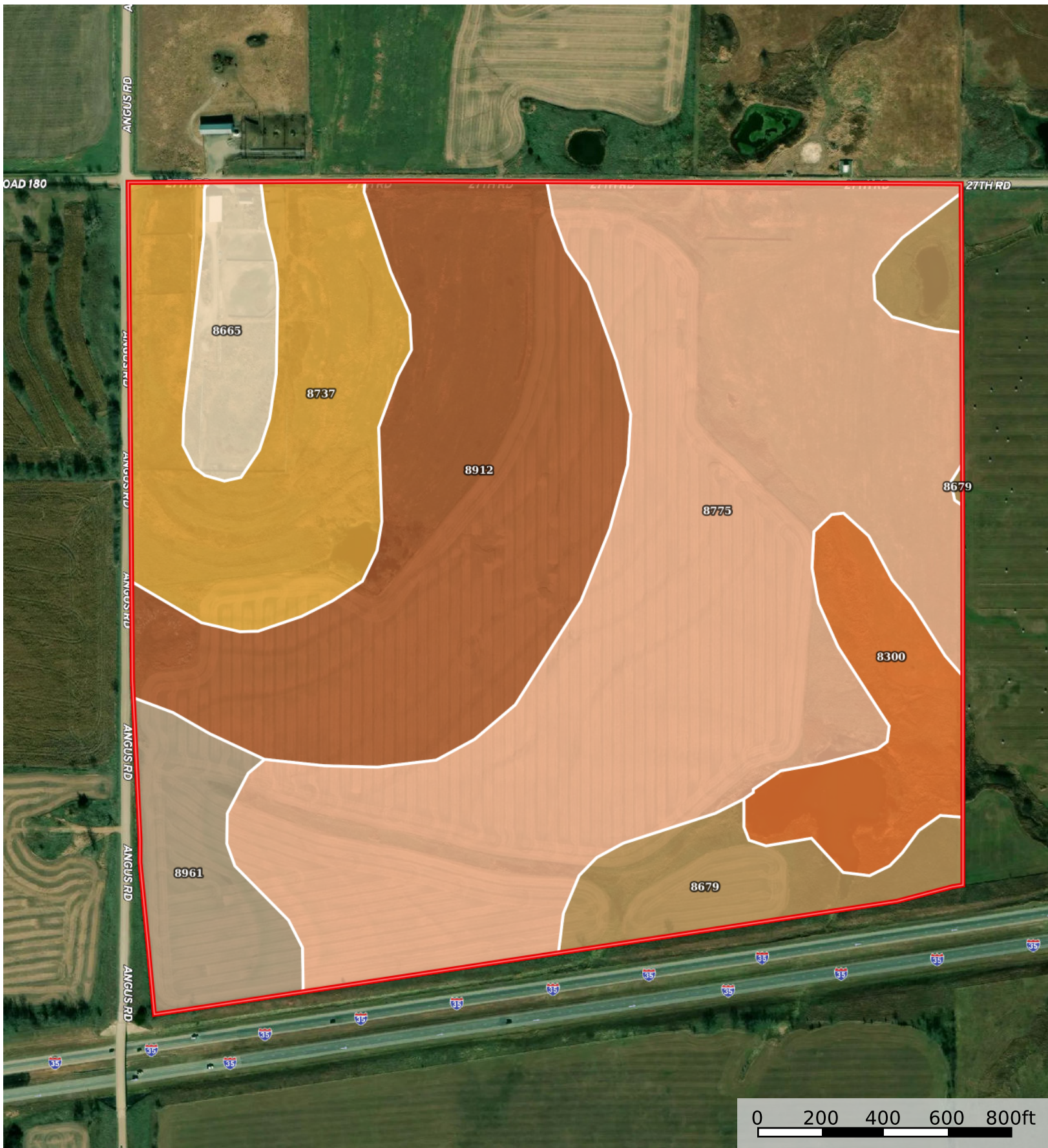



Slead

Coffey County, Kansas, 145 AC +/-



 Boundary

Boundary 147.05 ac

SOIL CODE	SOIL DESCRIPTION	ACRES	%	CPI	NCCPI	CAP
8775	Kenoma silt loam, 1 to 3 percent slopes	62.45	42.47	0	59	3e
8912	Summit silty clay loam, 3 to 7 percent slopes	33.71	22.92	0	68	3e
8737	Eram silty clay loam, 3 to 7 percent slopes, eroded	20.03	13.62	0	43	4e
8679	Dennis silt loam, 1 to 3 percent slopes	9.22	6.27	0	81	2e
8300	Verdigris silt loam, channeled, 0 to 2 percent slopes, frequently flooded	8.81	5.99	0	50	5w
8961	Woodson silt loam, 0 to 1 percent slopes	7.69	5.23	0	52	2s
8665	Clareson-Shidler complex, 1 to 8 percent slopes	5.14	3.5	0	37	6e
TOTALS		147.05(*)	100%	-	58.58	3.25

(*) Total acres may differ in the second decimal compared to the sum of each acreage soil. This is due to a round error because we only show the acres of each soil with two decimal.

Capability Legend

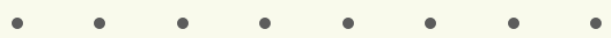
Increased Limitations and Hazards

Decreased Adaptability and Freedom of Choice Users

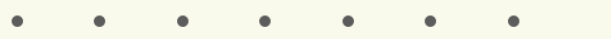
Land, Capability



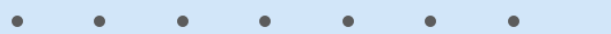
'Wild Life'



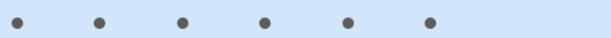
Forestry



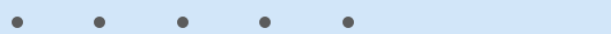
Limited



Moderate



Intense



Limited



Moderate



Intense



Very Intense



Grazing Cultivation

(c) climatic limitations (e) susceptibility to erosion

(s) soil limitations within the rooting zone (w) excess of water