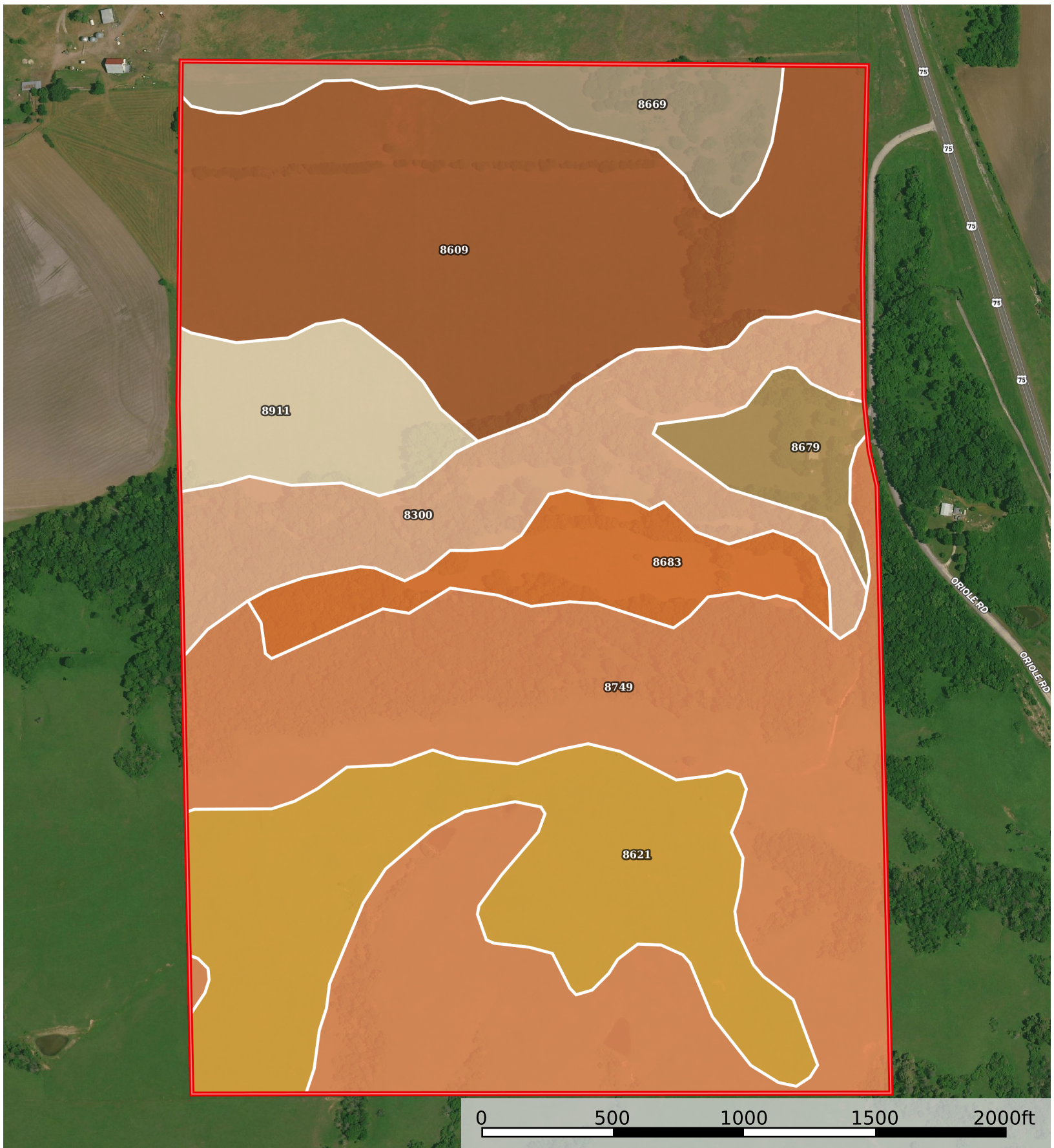


Hickey Tract 1

Woodson County, Kansas, 240 AC +/-



Boundary

Boundary 239.16 ac

SOIL CODE	SOIL DESCRIPTION	ACRES	%	CPI	NCCPI	CAP
8749	Eram-Collinsville complex, 5 to 15 percent slopes	76.22	31.87	0	43	6e
8609	Aliceville silty clay loam, 1 to 3 percent slopes	55.35	23.14	0	62	2e
8621	Bates loam, 1 to 3 percent slopes	37.11	15.52	0	66	2e
8300	Verdigris silt loam, channeled, 0 to 2 percent slopes, frequently flooded	25.97	10.86	0	50	5w
8683	Dennis silt loam, 3 to 7 percent slopes	13.29	5.56	0	77	3e
8911	Summit silty clay loam, 1 to 3 percent slopes	12.86	5.38	0	62	2e
8669	Clareson-Sogn complex, 1 to 8 percent slopes	11.79	4.93	0	34	6s
8679	Dennis silt loam, 1 to 3 percent slopes	6.57	2.75	0	81	2e
TOTALS		239.16(*)	100%	-	55.24	3.85

(*) Total acres may differ in the second decimal compared to the sum of each acreage soil. This is due to a round error because we only show the acres of each soil with two decimal.

Capability Legend

Increased Limitations and Hazards

Decreased Adaptability and Freedom of Choice Users

Land, Capability

	1	2	3	4	5	6	7	8
'Wild Life'	•	•	•	•	•	•	•	•
Forestry	•	•	•	•	•	•	•	
Limited	•	•	•	•	•	•	•	
Moderate	•	•	•	•	•	•		
Intense	•	•	•	•	•			
Limited	•	•	•	•				
Moderate	•	•	•					
Intense	•	•						
Very Intense	•							

Grazing Cultivation

(c) climatic limitations (e) susceptibility to erosion

(s) soil limitations within the rooting zone (w) excess of water