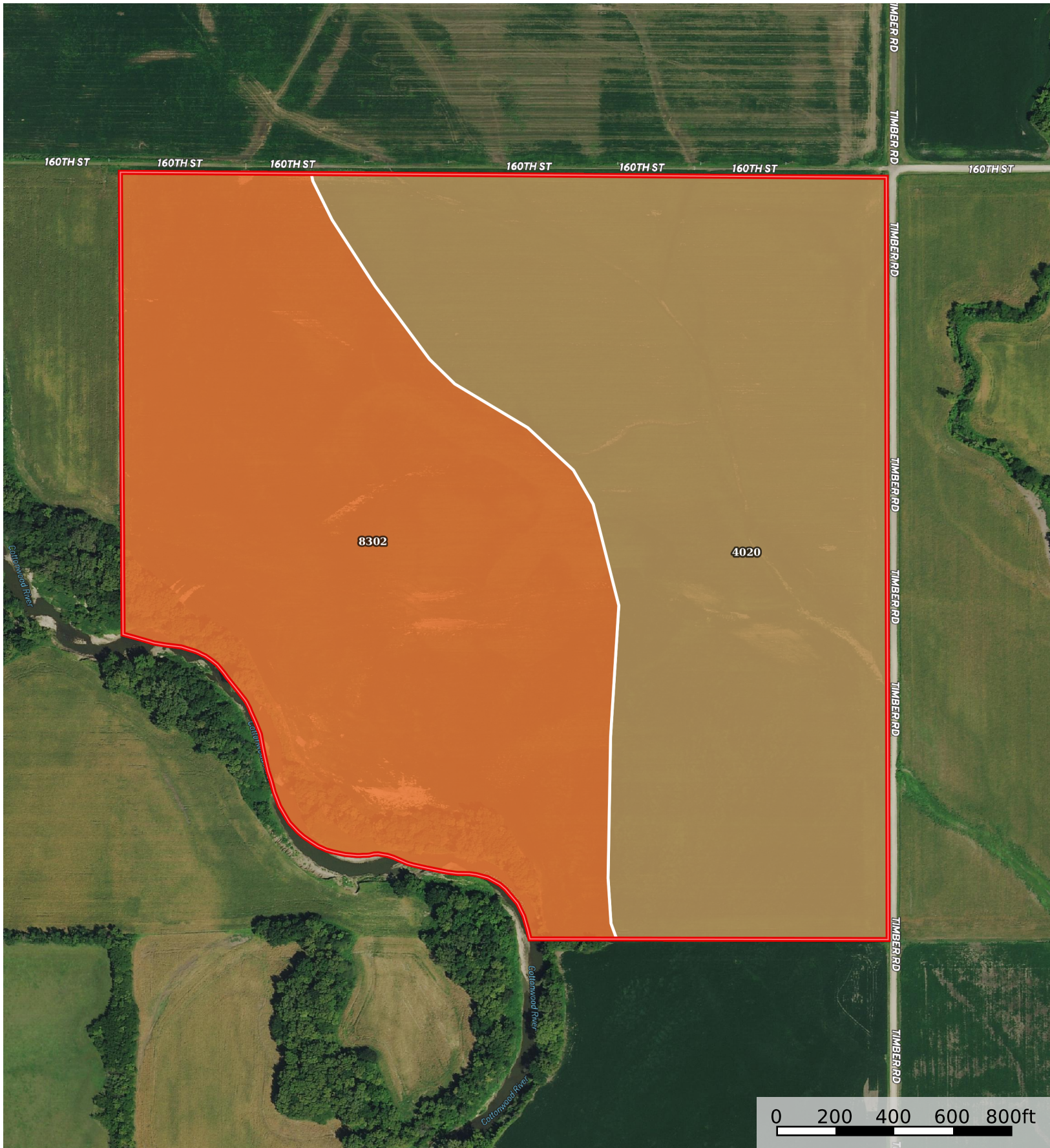


Calvert Tract 1

Marion County, Kansas, 141 AC +/-



 Boundary

Boundary 140.25 ac

SOIL CODE	SOIL DESCRIPTION	ACRES	%	CPI	NCCPI	CAP
4020	Chase silty clay loam, occasionally flooded	72.04	51.37	0	67	2w
8302	Verdigris silt loam, 0 to 1 percent slopes, occasionally flooded	68.21	48.63	0	85	2w
TOTALS		140.25(*)	100%	-	75.75	2.0

(*) Total acres may differ in the second decimal compared to the sum of each acreage soil. This is due to a round error because we only show the acres of each soil with two decimal.

