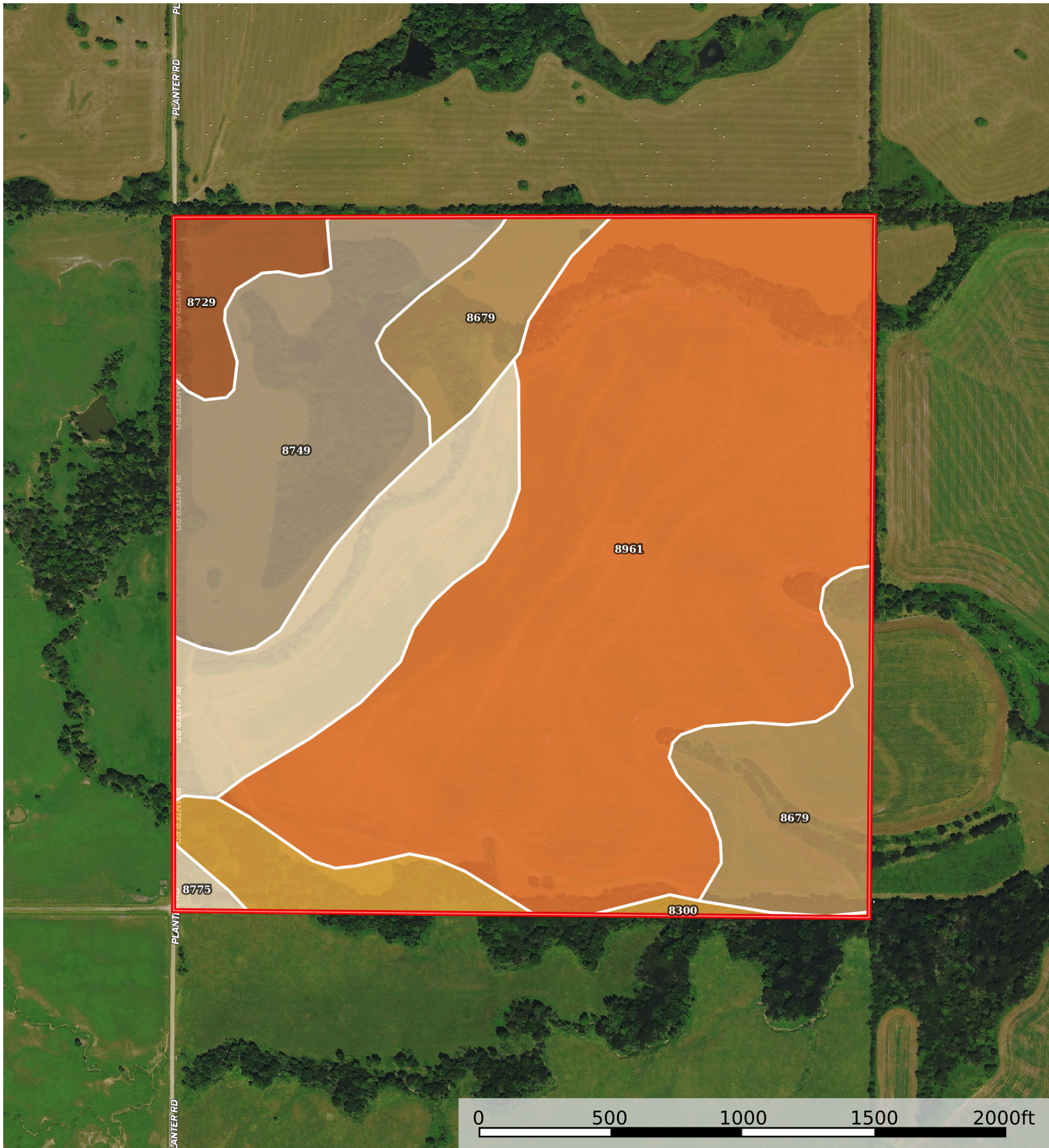


# Sutherland Tract 1

Coffey County, Kansas, 160 AC +/-



 Boundary

Boundary 161.4 ac

SOIL CODE	SOIL DESCRIPTION	ACRES	%	CPI	NCCPI	CAP
8961	Woodson silt loam, 0 to 1 percent slopes	85.17	52.77	0	52	2s
8749	Eram-Collinsville complex, 5 to 15 percent slopes	25.04	15.52	0	43	6e
8679	Dennis silt loam, 1 to 3 percent slopes	19.87	12.31	0	81	2e
8775	Kenoma silt loam, 1 to 3 percent slopes	18.8	11.65	0	59	3e
8300	Verdigris silt loam, channeled, 0 to 2 percent slopes, frequently flooded	7.21	4.47	0	50	5w
8729	Eram silt loam, 1 to 3 percent slopes	5.31	3.29	0	60	3e
TOTALS		161.4(*)	100%	-	55.17	2.9

(\*) Total acres may differ in the second decimal compared to the sum of each acreage soil. This is due to a round error because we only show the acres of each soil with two decimal.

