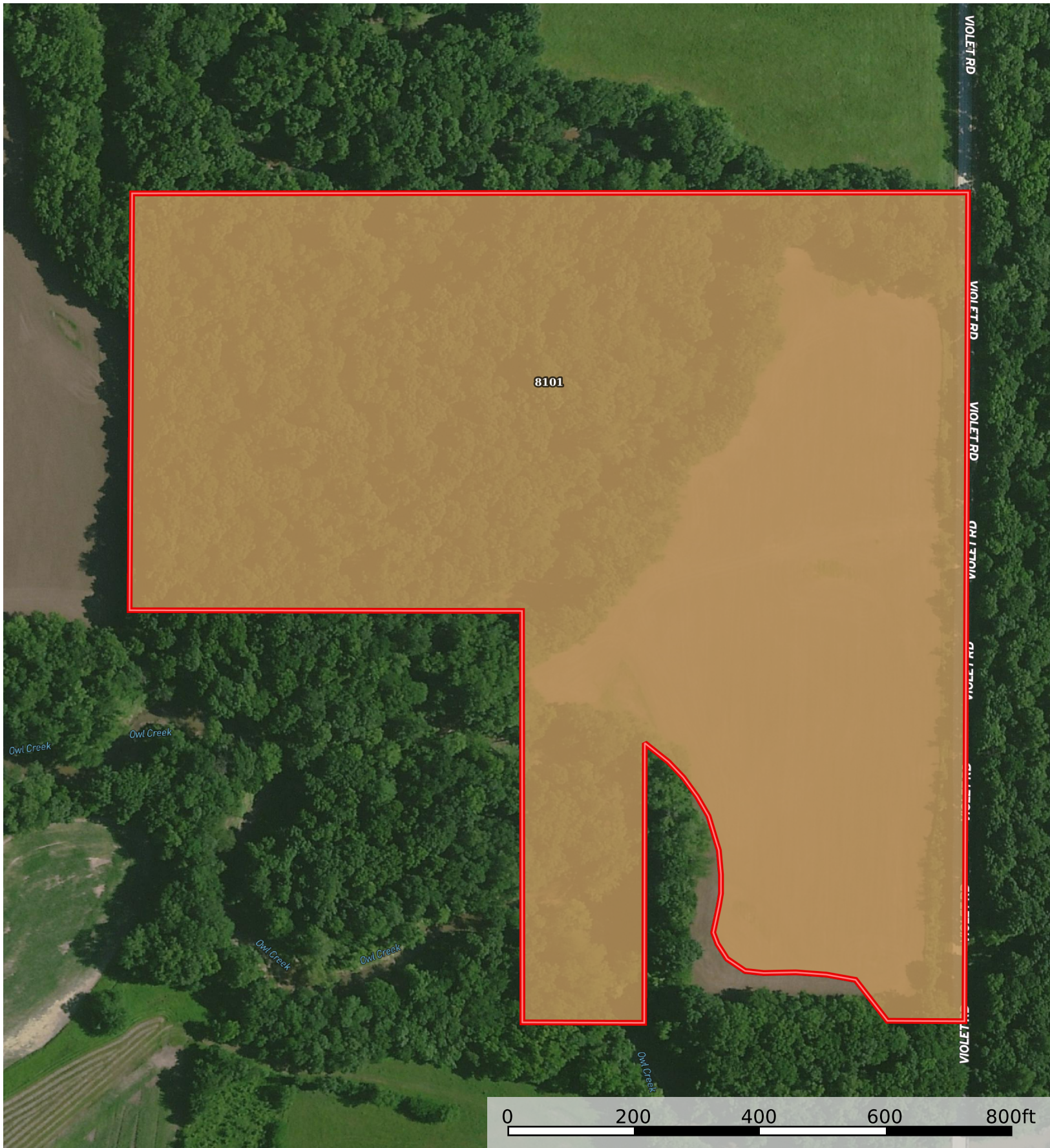


# Chambers 29

Woodson County, Kansas, 29 AC +/-



Boundary 29.45 ac

SOIL CODE	SOIL DESCRIPTION	ACRES	%	CPI	NCCPI	CAP
8101	Hepler silt loam, 0 to 2 percent slopes, occasionally flooded	29.45	100	0	86	2w
TOTALS		29.45(*)	100%	-	86.0	2

(\*) Total acres may differ in the second decimal compared to the sum of each acreage soil. This is due to a round error because we only show the acres of each soil with two decimal.

