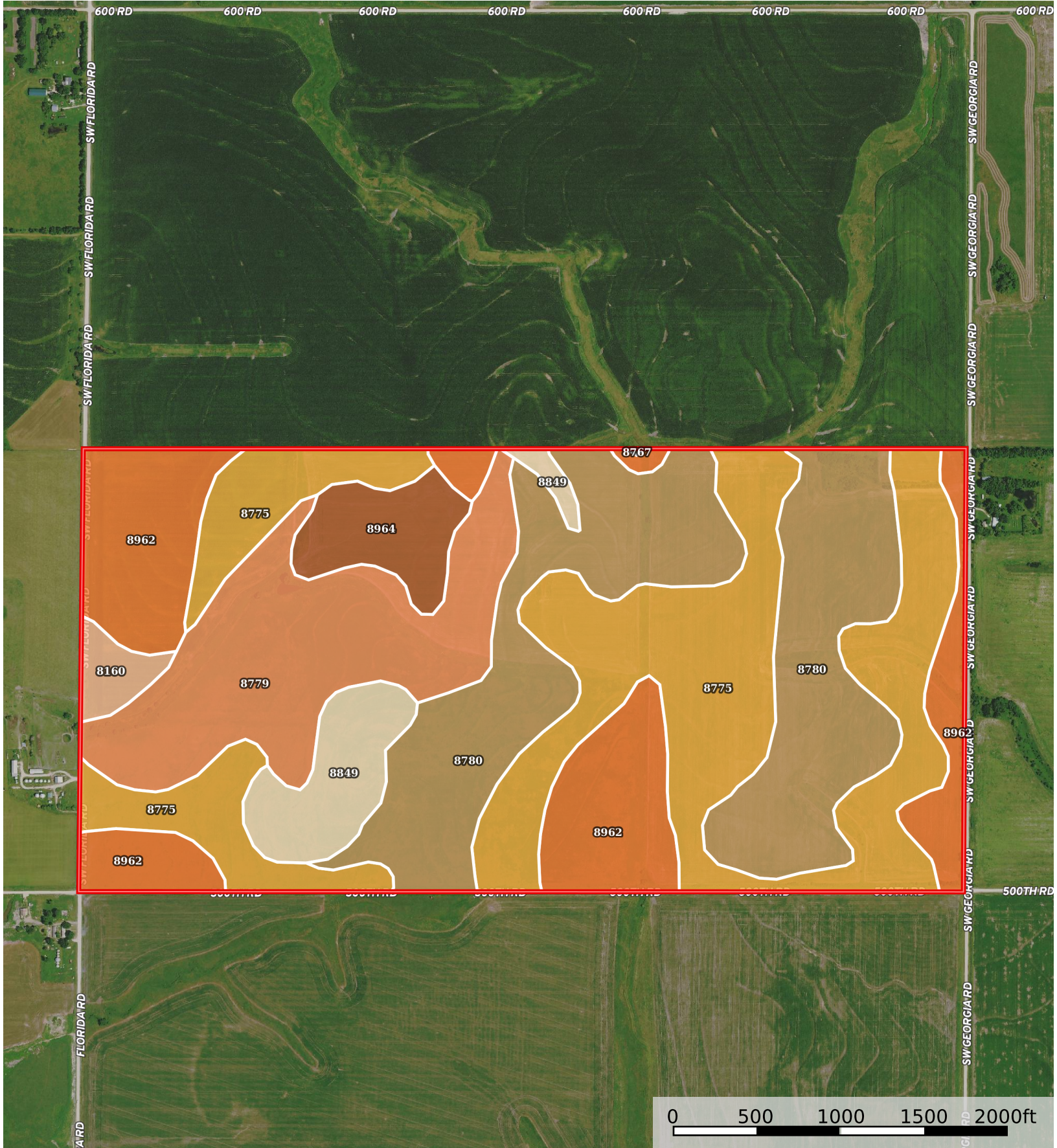


# Farris Tract 3

Anderson County, Kansas, 320 AC +/-



 Boundary

Boundary 322.25 ac

SOIL CODE	SOIL DESCRIPTION	ACRES	%	CPI	NCCPI	CAP
8775	Kenoma silt loam, 1 to 3 percent slopes	98.44	30.55	0	59	3e
8780	Kenoma-Olpe complex, 3 to 7 percent slopes	85.69	26.59	0	57	3e
8962	Woodson silt loam, 1 to 3 percent slopes	55.63	17.26	0	51	2s
8779	Kenoma silty clay loam, 1 to 3 percent slopes, eroded	49.86	15.47	0	51	3e
8849	Olpe gravelly silt loam, 3 to 15 percent slopes	15.72	4.88	0	55	6e
8964	Woodson silty clay loam, 1 to 3 percent slopes, eroded	12.49	3.88	0	50	4e
8160	Leanna silt loam, 0 to 2 percent slopes, occasionally flooded	4.37	1.36	0	64	2w
8767	Eram-Verdigris complex, 0 to 8 percent slopes	0.05	0.02	0	68	4e
TOTALS		322.25(*)	100%	-	55.37	3.0

(\*) Total acres may differ in the second decimal compared to the sum of each acreage soil. This is due to a round error because we only show the acres of each soil with two decimal.

