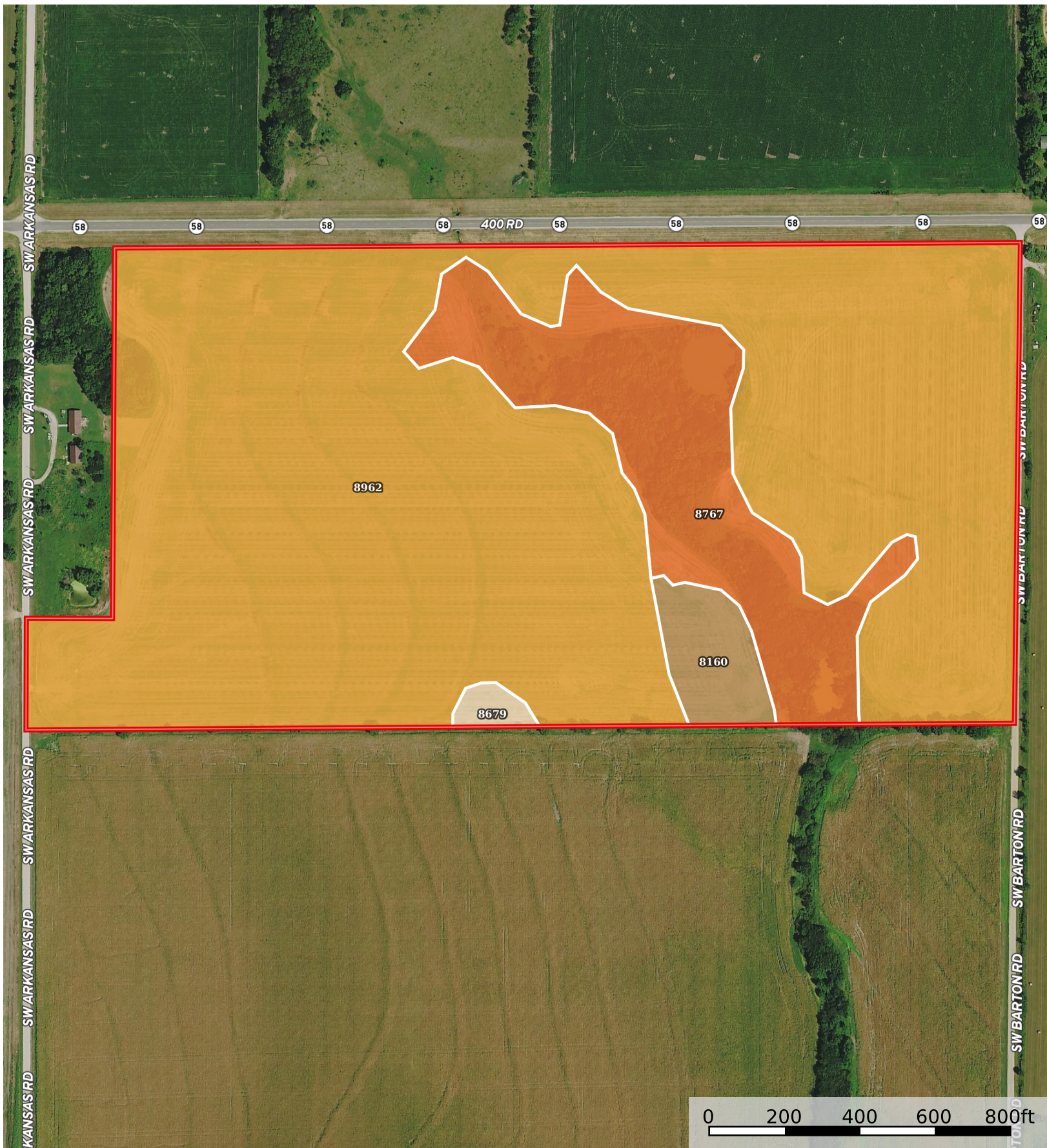



Hobert Tract 2

Anderson County, Kansas, 72 AC +/-



 Boundary

Boundary 71.88 ac

| SOIL CODE | SOIL DESCRIPTION | ACRES | % | CPI | NCCPI | CAP |
|-----------|---|----------|-------|-----|-------|------|
| 8962 | Woodson silt loam, 1 to 3 percent slopes | 58.25 | 81.04 | 0 | 51 | 2s |
| 8767 | Eram-Verdigris complex, 0 to 8 percent slopes | 11.15 | 15.51 | 0 | 68 | 4e |
| 8160 | Leanna silt loam, 0 to 2 percent slopes, occasionally flooded | 2.03 | 2.82 | 0 | 64 | 2w |
| 8679 | Dennis silt loam, 1 to 3 percent slopes | 0.45 | 0.63 | 0 | 81 | 2e |
| TOTALS | | 71.88(*) | 100% | - | 54.19 | 2.31 |

(*) Total acres may differ in the second decimal compared to the sum of each acreage soil. This is due to a round error because we only show the acres of each soil with two decimal.

