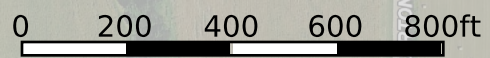
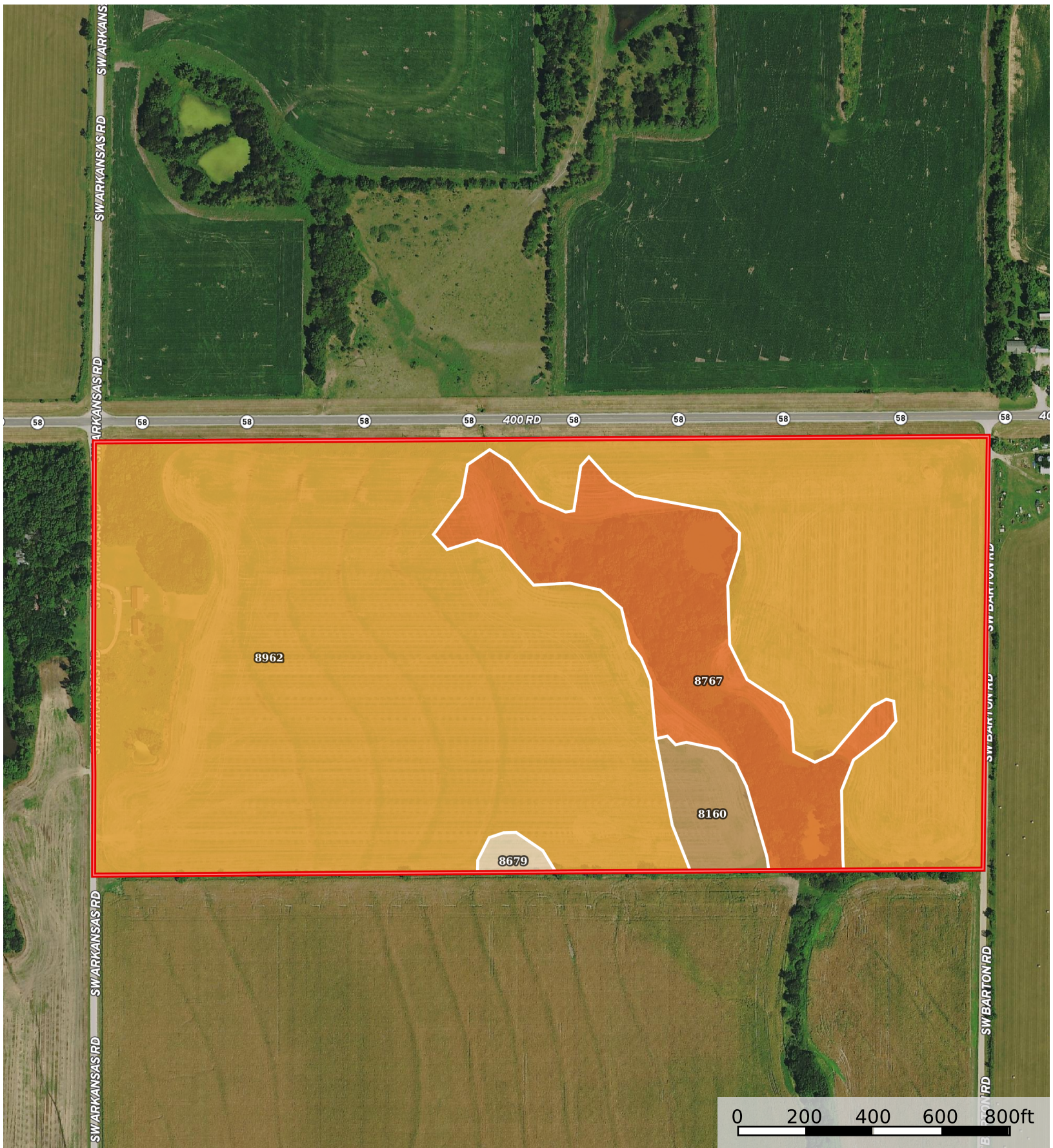



Hobert Tract 3

Anderson County, Kansas, 77 AC +/-



 Boundary

Boundary 77.09 ac

SOIL CODE	SOIL DESCRIPTION	ACRES	%	CPI	NCCPI	CAP
8962	Woodson silt loam, 1 to 3 percent slopes	63.46	82.32	0	51	2s
8767	Eram-Verdigris complex, 0 to 8 percent slopes	11.15	14.46	0	68	4e
8160	Leanna silt loam, 0 to 2 percent slopes, occasionally flooded	2.03	2.63	0	64	2w
8679	Dennis silt loam, 1 to 3 percent slopes	0.45	0.58	0	81	2e
TOTALS		77.09(*)	100%	-	53.98	2.29

(*) Total acres may differ in the second decimal compared to the sum of each acreage soil. This is due to a round error because we only show the acres of each soil with two decimal.

