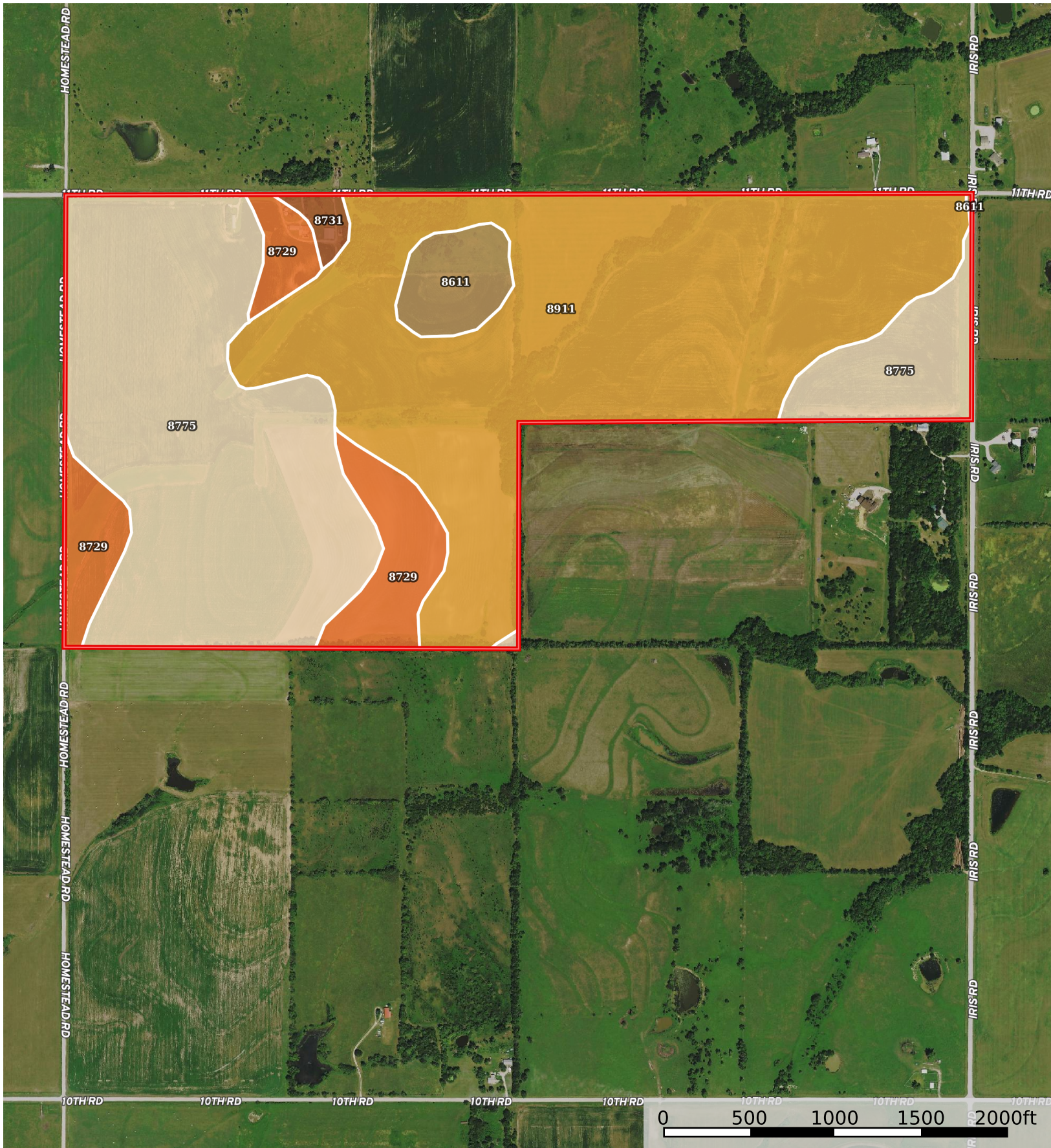


Hayes Tract 3

Coffey County, Kansas, 240 AC +/-



 Boundary

Boundary 241.85 ac

SOIL CODE	SOIL DESCRIPTION	ACRES	%	CPI	NCCPI	CAP
8911	Summit silty clay loam, 1 to 3 percent slopes	115.67	47.83	0	62	2e
8775	Kenoma silt loam, 1 to 3 percent slopes	93.9	38.82	0	59	3e
8729	Eram silt loam, 1 to 3 percent slopes	22.05	9.12	0	60	3e
8611	Apperson-Eram silty clay loams, 1 to 3 percent slopes	8.12	3.36	0	55	3e
8731	Eram silt loam, 3 to 7 percent slopes	2.11	0.87	0	51	4e
TOTALS		241.85(*)	100%	-	60.32	2.53

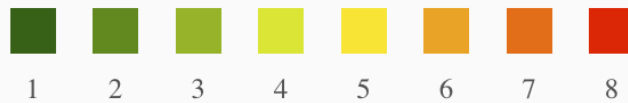
(*) Total acres may differ in the second decimal compared to the sum of each acreage soil. This is due to a round error because we only show the acres of each soil with two decimal.

Capability Legend

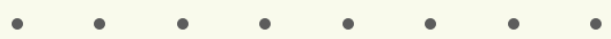
Increased Limitations and Hazards

Decreased Adaptability and Freedom of Choice Users

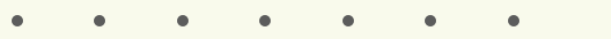
Land, Capability



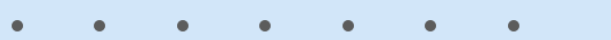
'Wild Life'



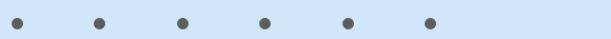
Forestry



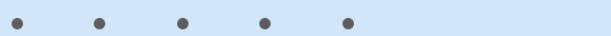
Limited



Moderate



Intense



Limited



Moderate



Intense



Very Intense



Grazing Cultivation

(c) climatic limitations (e) susceptibility to erosion

(s) soil limitations within the rooting zone (w) excess of water