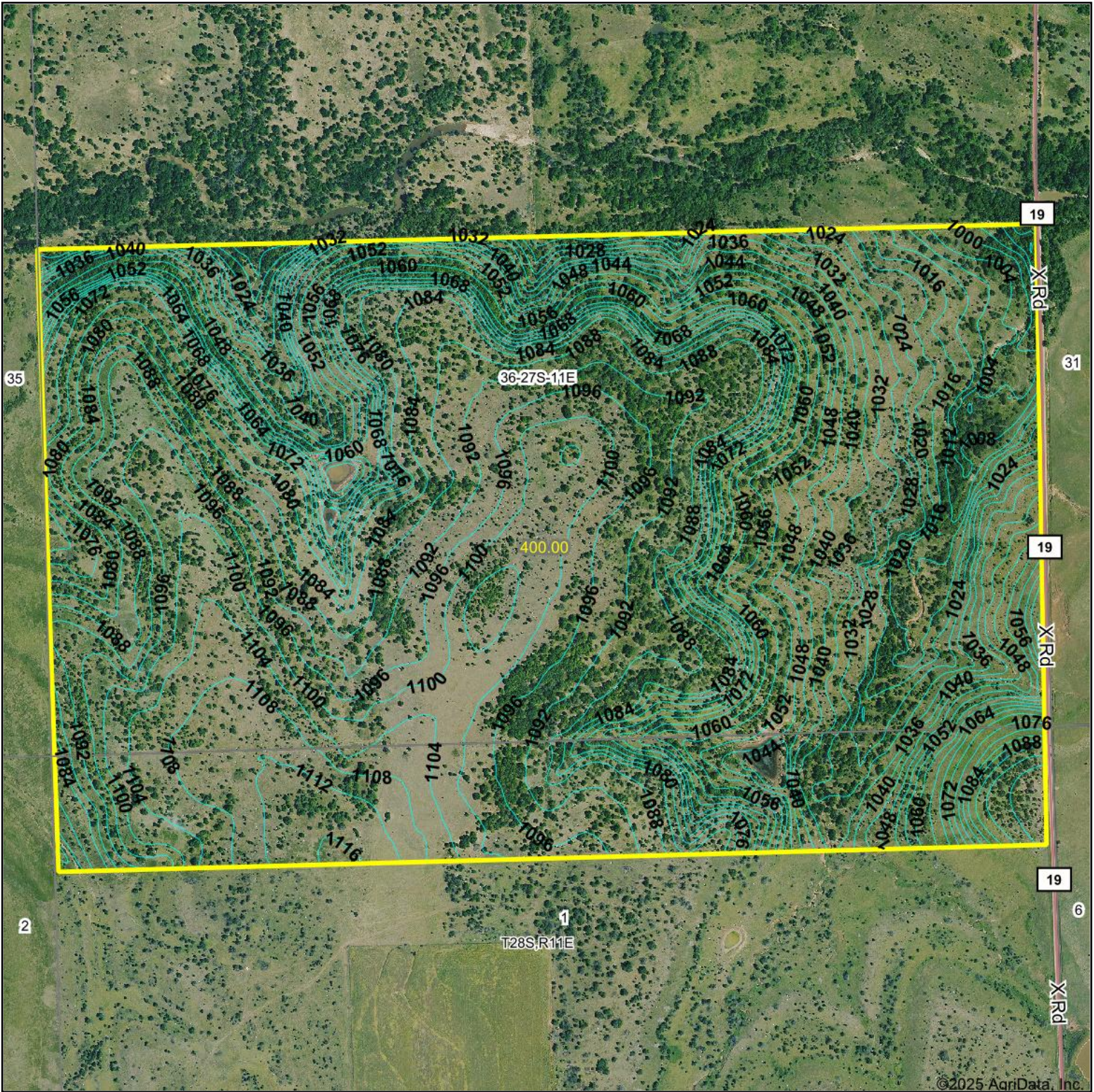


# Topography Contours



Source: USGS 10 meter dem

Interval(ft): 4.0

Min: 985.8

Max: 1,117.0

Range: 131.2

Average: 1,071.6

Standard Deviation: 29.69 ft

0ft 826ft 1651ft



2/10/2025

**36-27S-11E**  
**Greenwood County**  
**Kansas**

Boundary Center: 37.652159, -96.152059

Maps Provided By:



© AgriData, Inc. 2023

www.AgriDataInc.com