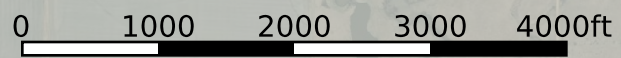
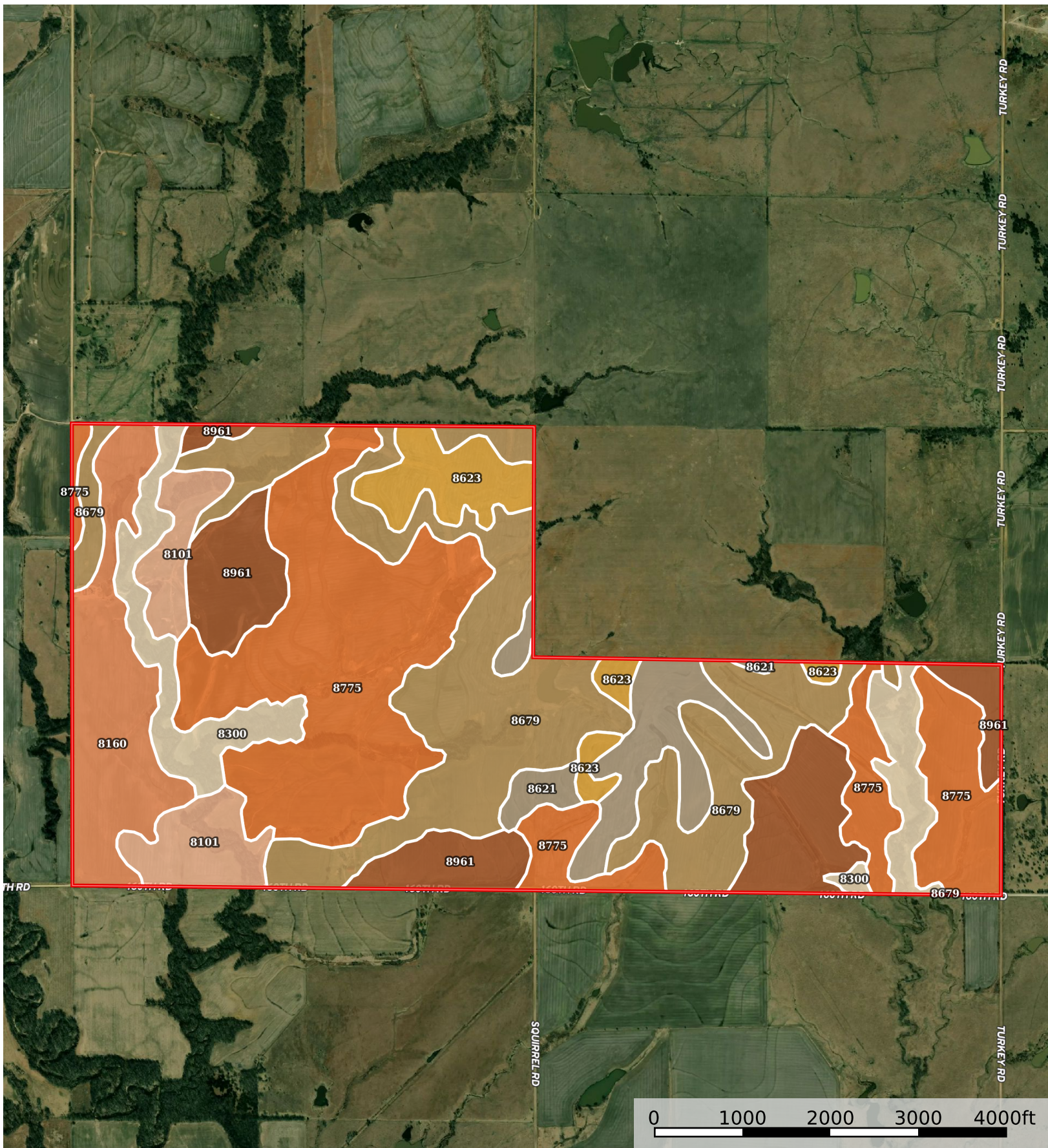


ML Farms and Cattle 960

Woodson County, Kansas, 960 AC +/-



 Boundary

|  Boundary 958.91 ac

SOIL CODE	SOIL DESCRIPTION	ACRES	%	CPI	NCCPI	CAP
8775	Kenoma silt loam, 1 to 3 percent slopes	279.8 1	29.18	0	59	3e
8679	Dennis silt loam, 1 to 3 percent slopes	246.2 9	25.69	0	81	2e
8961	Woodson silt loam, 0 to 1 percent slopes	118.0 2	12.31	0	52	2s
8160	Leanna silt loam, 0 to 2 percent slopes, occasionally flooded	85.01	8.87	0	64	2w
8300	Verdigris silt loam, channeled, 0 to 2 percent slopes, frequently flooded	71.8	7.49	0	50	5w
8621	Bates loam, 1 to 3 percent slopes	58.49	6.1	0	66	2e
8101	Hepler silt loam, 0 to 2 percent slopes, occasionally flooded	52.83	5.51	0	86	2w
8623	Bates loam, 3 to 7 percent slopes	46.66	4.87	0	63	3e
TOTALS		958.9 1(*)	100%	-	65.67	2.57









(*) Total acres may differ in the second decimal compared to the sum of each acreage soil. This is due to a round error because we only show the acres of each soil with two decimal.

Capability Legend

Increased Limitations and Hazards

Decreased Adaptability and Freedom of Choice Users

Land, Capability

								
	1	2	3	4	5	6	7	8
'Wild Life'	•	•	•	•	•	•	•	•
Forestry	•	•	•	•	•	•	•	
Limited	•	•	•	•	•	•	•	
Moderate	•	•	•	•	•	•		
Intense	•	•	•	•	•			
Limited	•	•	•	•				
Moderate	•	•	•					
Intense	•	•						
Very Intense	•							

Grazing Cultivation

(c) climatic limitations (e) susceptibility to erosion

(s) soil limitations within the rooting zone (w) excess of water